

Wycombe High School



Into The Sixth Form 2011

Fortiter, Fideliter, Feliciter

Welcome to Wycombe High School's Sixth Form!

We believe that our Sixth Form offers a stimulating, fulfilling, memorable and happy experience. This pack is intended to give all prospective Sixth Formers and their parents an insight into what we can offer, and to provide you with some advice on how to select your A Level options.

We want our Sixth Formers to receive the very best education. Our A Level results are among the best in the country. Excellent teaching, backed by comprehensive guidance and advice, mean that almost all of our students go on to their first choice of university and degree course. Take a look at the 2010 A Level results and Leavers' Destinations towards the end of this booklet.

Being a part of our Sixth Form is, however, so much more than just the pursuit of academic qualifications. It is an exciting time for you to mature and develop personally as a member of a strong community. You will contribute to, and benefit from, all the opportunities available. You will develop your skills through our rich extra-curricular and enrichment programme, details of which are included in this booklet.

For Year 11 students already at Wycombe High, entry into our Sixth Form is a natural next step; you will build upon the firm groundwork already laid down and move into a more adult and independent environment with the added bonus of knowing and being known by the staff. We are also delighted to welcome new entrants to Wycombe High School. In 2010, 32 students joined our Sixth Form from a range of independent and state schools. All of them very quickly settled in and have made lasting friendships.

I believe that we offer a very special Sixth Form experience. Our Ofsted inspection (April 2007) rated Wycombe High School's Sixth Form as 'Outstanding'. More important than Ofsted, perhaps, are the opinions of our students. In their 2010 survey last year, 96% said that they had enjoyed their time in the Sixth Form. Among the many unsolicited compliments were the following:

- Students are encouraged to fulfil their potential
- We are treated as adults and our opinions are valued
- There is great community spirit
- The staff are friendly and approachable and always there when you need support

It gives me great pleasure to invite you to our 'Into the Sixth Form' Evening on Wednesday 20 October. I very much look forward to welcoming you to the school next September and to working with you over the next two years.

Yours sincerely



Su Chamberlain
Head of Sixth Form

Page No

Ofsted Inspection Report - April 2007	1
General Information about WHS Sixth Form	2
• A Typical Week	2
• Our Facilities	2
• Pastoral Care	2
• Curriculum	3
• Enrichment Programme	3
• Voluntary Work	3
• Leadership Opportunities	4
• Dress Code in the Sixth Form	5
• Extra-Curricular Opportunities	6
Choosing A levels at Wycombe High School	7
• Selecting your Options	8
• To assist in your Decision Making	9
• Constraints on your Choices	9
• Frequently Asked Questions	10
Entry Requirements into WHS Sixth Form	11
Application Procedure	12
Higher Education	13
Appendix 1: 2010 A Level Results	14
Appendix 2: 2010 Leavers' Destinations	15 - 21
Appendix 3: Choosing A Level subjects with a view to Higher Education & Careers	23 - 27
Appendix 4: Dates and Procedures	28



Grade: 1

Sixth Form provision is outstanding. Leadership of the Sixth Form is innovative, very effective and a major reason for its continuing success. The majority of the students stay on in the Sixth Form and completion rates of courses are very high. Independent learning is a strong feature of sixth form life. Students learn in a secure and positive learning environment which is enriched by an excellent curriculum that is regularly reviewed to meet their needs. Tutors support students' pastoral and academic needs very effectively to complement the outstanding subject teaching. Hence, students make excellent progress and they achieve exceptionally high standards.

There is a regular and rigorous system for reviewing students' progress which ensures that early support is provided for those who are not working to their potential. A Year 13 student liked 'the fantastic support structure through which the teachers are always there to guide and praise students in a respectful and caring manner'. Sixth Formers freely give their time for the benefit of the whole school. For example, prefects organise the school Sports Days and act as Assistant Tutors. This contributes to the exceptionally good relationships that exist within the Sixth Form and in the wider school community.

Inspection Report: Wycombe High School
Ofsted, April 2007



A Typical Week

We operate a ten-day timetable cycle of fifty periods, each one hour long. Over a fortnight, you will generally have eight lessons in each of your AS subjects. In addition to AS subjects, you are likely to have up to five lessons in your Enrichment Subject (although Young Enterprise operates outside school hours), and at least one PE lesson a week. A typical Year 12 student might expect to have up to ten study periods a fortnight. Year 12 students are expected to remain on site during the school day, except for lunch or external community service. Private study facilities are available in the Wainwright Learning Centre and Miller Block, while the Common Room provides a venue for relaxation.

Lessons apart, there is a great deal to occupy you. Sixth Form Assembly is compulsory and is held once a week in the Main Hall. It is run by tutor groups on a rotational basis. A rich range of school society, drama, musical and sporting opportunities take place at lunch and after school, while many Sixth Formers volunteer for additional duties as Prefects, Assistant Tutors and Academic Assistants.

Our Facilities

Our Sixth Form Centre is located in the Miller Block. As well as classrooms and offices, the Miller Block contains a large Common Room with attached kitchen, a Study Area, a Lecture Theatre, a computer room that is exclusively for Sixth Form use, and a Careers and University Resources Room. All Sixth Formers may rent a locker, while there is a Sixth Form car park to the rear, for which you may purchase a car parking licence. A member of the Student Leadership Team assists the Head of Sixth Form in the management of the Miller Block.

In addition, you may make use of any of the wider school facilities, which include the purpose-built learning facilities in the Wainwright Centre, the Drama Studio, and the Sports Block, which includes a Fitness Studio that is much frequented by Sixth Formers.

Pastoral Care

At Wycombe High School we aim to produce mature, confident, articulate students, ambitious to achieve their own potential, but also altruistic and ready to contribute to the society in which they find themselves. In all this, pastoral care plays an important role.

You will be allocated to a small tutor group. There are ten tutor groups in Year 12, each of which has about twenty students. Your tutor will monitor your academic progress and general welfare. Normally, you keep the same tutor for both the Lower and the Upper Sixth, and see your tutor daily for registration. Tutorial sessions are held three to four times a week, when your tutor will carry out pastoral work on an individual basis, or run a whole tutor group meeting. Additionally, five 'Personal Enrichment Days' are held over the course of a year. These cover a comprehensive programme including lessons on learning styles, UCAS applications, sexual health, finance, cancer awareness and even car maintenance.

The move from main school to the Sixth Form is a big one, and we work hard to ensure that you maximise the opportunities presented and realise your talents and ambitions. To this end, an Induction Day is arranged for all Sixth Formers and an additional one for those new to Wycombe High School. We also organise a programme of individual tutoring, which aims to ease the transition into the Sixth Form. We recognise that occasionally some students find themselves encountering difficulties. We will do whatever we reasonably can to provide you with the information and support you need to find appropriate advice to help you solve any issues. We also have a Learning Mentor to help in such an eventuality.

We are fortunate in having a designated Pathways Advisor who is based in the Miller Block. She works with individual students in Key Stage 4 and the Sixth Form on issues such as study or exam anxieties, time management, study skills, revision techniques and career guidance.

General Information about WHS Sixth Form

Curriculum

The Sixth Form Curriculum at Wycombe High School is based on A Levels. These usually consist of four modules of approximately equal size. Two of these make up an Advanced Subsidiary (AS) qualification, representing the first half of the A Level course. AS exams take place at the end of Year 12. The other two modules, known as A2, represent the second half of the full A Level course, and are examined at the end of Year 13.

We expect most of our Sixth Formers to follow a programme starting with four AS subjects in Year 12, and continuing with three of these subjects to A2 and thus full A Level in Year 13. Most students will therefore complete qualifications in three A Levels and one AS. However, we are flexible and aim to meet individual needs which may involve reducing, or extending, this workload.

Full details of the options available and advice on selecting options are contained in this booklet and in the Options Flyers.

Enrichment Programme

As well as A Levels, we ask all Year 12 students to participate in the Wycombe High School Sixth Form Enrichment Programme which has five parts.

These are, in brief:

- **Personal Enrichment Programme** Students are taken off timetable for five Personal Enrichment days over the year. These cover issues such as learning styles, well being, UCAS and Philosophy and Ethics. We have adopted what we hope is an imaginative and interesting approach to the legal requirement in this latter area. You will attend events devoted to philosophical and ethical issues, such as euthanasia, 'Women's Voice', 'Does God Exist?' and a 'Question Time' panel with representatives from different faiths.
- **Physical Exercise** Students are given the challenge of completing 60 hours of physical exercise in school in one year. Entire forms

usually do PE at the same time, for at least one period a week. Various options exist including cheerleading, fencing, yoga, badminton, trampolining, football etc. There are also numerous sports clubs and dance groups to join, many of which just want you to be enthusiastic - ability is less important than a willingness to get involved. You can also use the Fitness Studio.

- **Academic Enrichment and Extension** You will be required to complete one of eight options: GCSE Spanish (from scratch), GCSE Italian (from scratch), AS Geology, AS Critical Thinking, AS Film Studies, AS Photography, Sports Leadership Award, or Young Enterprise. Musicians who are both committed in a major way to school extra-curricular music and to the County or National Youth orchestras can count this as their academic enrichment option.
- **Extra-Curricular Involvement** Students are challenged to spend at least 30 hours' involvement in one or more of the many and varied extra-curricular opportunities on offer in the school. Such activities will allow them to develop and extend their own personal and interpersonal skills and are important in developing a sense of whole school community. To inspire them, a full programme of what is on offer this year at present is included on page 6. There is every opportunity for students to think creatively and develop their own talents and interests within the Sixth Form and within the school as a whole.
- **Community Service** We ask that you complete a minimum of 60 hours of Community Service. This can be completed in or out of school, in one area, or across several, in one term or over several. There is a quite astonishing variety of ways in which students can complete Community Service, including voluntary work outside school and assisting younger students in school.

Voluntary Work

We are very happy for you to undertake some voluntary work in your free periods. There are many organisations, even within walking distance, which need your help and to which you can contribute as well as developing life skills and experiences.

Voluntary work is very rewarding. As well as helping others, you can build your confidence and self-esteem. You could even find yourself more employable as a result. Voluntary work is essential for those of you contemplating a future in, for example, medicine, veterinary medicine, teaching, physiotherapy or social work.

You can be involved in any of the following:

- **vFifty Programme** Students can make their own arrangements through Wycombe Youth Action, which arranges volunteering projects from environmental projects to staffing the local summer radio station.
- **Helper at Wycombe Hospital** Every year we have a small number of opportunities for students to undertake work experience at the local hospital. This is only for students aged 18+ considering reading medicine, who have very good/excellent GCSE results.
- **Assistant at Maplewood** A Special Needs Unit for Sixth Form students based at Maplewood School, Cressex Road, round the corner.
- **Assistant at Hillcrest or Verney Avenue** These are day care centres for adults with disabilities. Students help in various activities, like creating a pantomime, drama or music/dance activities or just playing some games and chatting.
- **Assistant at Horizons** A sports club for children with disabilities between the ages of 5 -11 which meets on Tuesday, Wednesday and Thursday nights. Each night is different with tennis, athletics, or swimming. This does take commitment as the children to whom you will be assigned, under the supervision of a coach, get very, very attached and really look forward to your help and encouragement.
- **Assistant in local primary schools** This can be a primary school close to school or close to your home as long as no lessons are missed.
- Students can also make their **own arrangements** for voluntary work. For example, in the past some have worked at Oxfam.

Leadership Opportunities

A major advantage of being in a Sixth Form is that you are a senior member of a wider community, with all the leadership opportunities that this entails. At the least, younger members of the school will see Sixth Formers as role models, and we hope that you will take this responsibility seriously.

Beyond that, our Sixth Form provides you with many opportunities to develop your leadership talents and abilities. These include: acting as an Assistant Tutor or Academic Assistant; being a Prefect; directing one of the Year 8 plays; running a club or activity; representing your year group on the School Council; and working as a Young Enterprise Managing Director. Volunteering for any of these roles will allow you the opportunity to develop many different personal skills whilst also ensuring a closer link between the Sixth Form and the main school students.

- **Clubs and Activities** Some of the best clubs in recent years have been initiated and run by Sixth Form students. Islamic Union, Christian Union, the Bollywood Club, The History and Classics Society, the Debate Society and the Jazz Band are all organised by Sixth Formers.
- **Assistant Tutors** Every lower school form has two attached Assistant Tutors from Year 12. Tutor Assistants visit their form at least three times a week, and help to teach PSHE, organise assemblies and fund raising activities, and so much more. It's all ideal practice for future teachers and managers.
- **ACAs - Academic Assistants** As one of these, you would help a younger student experiencing difficulties with a specific subject. You might offer a Year 7 student one-to-one help with Maths, for example, or help out in Year 8 Art lessons.
- **Theatre Directors and Backstage Hands** The Year 8 Thespian Extravaganza is held in the Autumn term: each Year 8 form has two Year 12 Directors, and performs its play before an audience of the whole year. Sixth Formers also organise props, costumes, lighting and sound effects for the school plays and musicals.

General Information about WHS Sixth Form

- **Senior Prefects** Forty Year 12 students become Senior Prefects. They are on patrol or ICT duty one lunchtime a week. Tact and humour are required! The Student Leadership Team organise the selection procedure for Senior Prefects.
- **Sports, Dance and Gym Captains** These are selected by the PE Department: applications are invited from any Upper Sixth student in September of Year 13.
- **Library Assistants, Careers Assistants** Students who love books, organising shelves, helping with queries, may act as volunteers in the Learning Centre and in the Careers Library.
- **Student Leadership Team** At present we have a team of twelve, all of whom are in Year 13. Any Year 12 student (as long as they have a sound record) can apply to be considered for the SLT. A selection procedure takes place early in the Summer term of Year 12 - it involves a series of hopefully amusing activities and tasks, following which all participants vote. Unusually, students themselves select the SLT, and the twelve successful candidates then choose their roles, including that of Head Girl.
- **School Council** Each form elects one Year Council Representative. Students have to attend two to three meetings a term and they may well have delegated tasks to complete between meetings, and be asked to sit on interview panels. They may also be asked to represent their entire Year group at a full School Council.
- **Student Ambassadors** Year 12 and Year 13 students can volunteer to work on Reception and to run tours for prospective parents during their study periods. Many Year 12s also volunteer to act as tour guides on Open Evenings and on the 'Into the Sixth Form' Evening.

Dress Code in the Sixth Form

We do not have a uniform in the Sixth Form because we want students to prepare for university by being able to learn how to express their own style and individuality in a safe environment. However, we would like them to look **neat, tidy**, and most importantly, **appropriate** for a school environment. They are inevitably role models to the younger years in the school and we ask them to

take this responsibility seriously. We do, therefore, insist on the following:

- No excessive exposure of flesh
 - no spaghetti or shoelace straps to tops or dresses
 - no strapless tops or dresses
 - no plunging necklines
 - no bare midriffs
 - no flip flops
- Leggings should not be worn as an alternative to trousers
- Mid thigh/mid length skirts, shorts and dresses can be worn
- No T-shirts which have inappropriate or coarse comments/logos on them
- No coats - please see that coats stay in Miller or in lockers
- Visible piercings, other than in the ear lobes, and tattoos / body paintings are not permitted
- Unnatural hair colouring is not permitted; the interpretation of 'unnatural' is as follows:
 - a colour that is not found within the natural hair colour spectrum, ie a bright, extreme or vivid colour
 - a combination of colours that is easily visible or stark in contrast
- If hair extensions are worn, no beading is permitted. Extensions must also be in a colour that naturally blends with the hair
- Garments covering the face or whole body are not permitted
- Muslim students who wish to wear hijabs may do so.

The Headteacher is the final arbiter of what is acceptable.

We want to show the Sixth Form and the school at its very best and instil in individuals a sense of what is appropriate, and so on school functions we would like Sixth Formers to dress in a more professional manner than their normal day wear. All Sixth Formers shall wear black trousers/skirts and white shirts on formal occasions.

Extra-Curricular Opportunities in WHS Sixth Form

Volunteering to Help	Sports and Dance	Clubs and Societies	Arts, Music & Performance	Leadership
<ul style="list-style-type: none"> • Assistant Tutors • Patrol Senior Prefects • Academic Assistants (ACAs) • ICT Senior Prefects • Student Ambassadors • vFifty Volunteers • Maplewood • Horizons • Hospital • Hillcrest • Verney Avenue • Careers Monitors • Library Monitors • Science Club helpers • Maths Club assistants • Art Dept helpers • Sixth Form Ball/ Leavers' • Book helpers • Backstage for all productions • Sixth Form web page • Charity Representatives • Environmental Representatives 	<ul style="list-style-type: none"> • Autumn & Spring terms: <ul style="list-style-type: none"> • Hockey • Indoor Hockey • Senior Netball • Senior Badminton • Table Tennis • Fencing • Rugby • Swimming • Basketball • Cross Country • Gym Squad* • Football • Dance Performance Group* • Senior Dance Club • Street Dance • Summer term: <ul style="list-style-type: none"> • Tennis • Rounders • Athletics • Cricket • Fitness Studio (all year) • Trampoline (all year) • Cheerleading (all year) 	<ul style="list-style-type: none"> • Debating Society • Christian Union • Islamic Union • Bollywood Club • Psychology Society • History and Classics Society • Latin Club • Maths Support • English Drop-in • Sixth Form Reading Group • Politics Society • The French Culture Society • Japan Club • Medical Society • Film Club • Philosophy and Cheese Society • Literary Theory Group • Think Global, Act WHS 	<ul style="list-style-type: none"> • School Play * • School Musical * • Female parts in JHGS/RGS musicals * • Hi-Lights Dance & Gym Festival or 'Energize' • Pantomime • Carol Service • Chamber Choir * • Sixth Form Choir • Concerts x 3 • Jazz Band # • Senior Orchestra ~ • Concert Band ~ • Guitar Ensemble ~ • Flute Ensemble ~ • Chamber Music groups # • Joint concerts with RGS ~ • Concerts in the Community • Bailey Murphy Competition • Y12 & Y13 choirs • WHS Theatre Company 	<ul style="list-style-type: none"> • Student Leadership Team • Year & School Council • Repts • Assistant Tutors • Gym Captain • Dance Captain • Games Captain • Maths Captain • ICT Captain • Directors of Y8 Drama Festival • Young Enterprise • Directors • Leadership of any club or society • World Challenge • CSLA • Patrol Senior Prefects • ICT Senior Prefects • Student Ambassadors • Charity Representatives • Environmental Representatives

* By audition or by trial - except for backstage volunteers who are all welcome!

By invitation or self-motivation

~ Grade 5/6 and above

As well as all the above, individual departments run subject-based competitions. Economics, for example, run the Bank of England Interest Rate Challenge.

Choosing A Levels at Wycombe High School

At the moment, A Levels are still the preferred qualifications for admission to most Higher Education establishments. At Wycombe High School we currently offer thirty one subjects at A Level, and a further five at AS. Most of these are subjects studied at GCSE, though there are several 'new' subjects.

We usually require all Year 12 students to study four AS subjects and one additional 'Enrichment' or 'Extension' subject. In Year 13, we ask students to select three of their AS subjects to take on to A Level. The final decision on which subject to drop is made in January of Year 12. However, we pride ourselves on being flexible. For example, gifted students may, if possible, take all four AS subjects onto A2, while musicians who play at county or national level are exempted from the Enrichment or Extension subject.

The **AS options** on offer for 2011 are as follows:

BIOLOGY	HISTORY - MODERN
BUSINESS STUDIES	ICT
CHEMISTRY	LATIN
CLASSICAL CIVILISATION	MATHS - STATISTICS
COMPUTING*	MATHS - MECHANICS
D & T: FOOD TECHNOLOGY	MUSIC
DRAMA AND THEATRE STUDIES	MUSIC TECHNOLOGY*
ECONOMICS	PHILOSOPHY & ETHICS OF RELIGION
ENGLISH LITERATURE	PHYSICAL EDUCATION
FINE ART	PHYSICS
FRENCH	PRODUCT DESIGN: GRAPHICS WITH
FURTHER MATHS	MATERIALS TECHNOLOGY
GEOGRAPHY	PRODUCT DESIGN: TEXTILES
GERMAN*	PSYCHOLOGY
GOVERNMENT & POLITICS	SOCIOLOGY
HISTORY - EARLY MODERN	SPANISH

* These subjects are taught at John Hampden Grammar School

The **Enrichment and Extension subjects** on offer for 2011 are:

COMMUNITY SPORTS LEADERSHIP AWARD
CRITICAL THINKING AS LEVEL
FILM STUDIES AS LEVEL
GEOLOGY AS LEVEL
ITALIAN GCSE
LAW AS LEVEL
PHOTOGRAPHY AS LEVEL
SPANISH GCSE
YOUNG ENTERPRISE

In addition, Year 13 students are offered an additional opportunity to take CLASSICAL GREEK GCSE, LATIN GCSE, the Level 3 EXTENDED PROJECT QUALIFICATION, the IMEDIA AWARD and ADVANCED EXTENSION AWARDS in certain subjects.

Selecting your Options

One of the great pleasures of the Sixth Form is the fact that you can choose your subjects. At GCSE you had a certain amount of choice but this was necessarily limited: there are some compulsory National Curriculum subjects. Now, the world is your oyster - almost.

Choosing AS subjects requires some thought. What follows is some guidance on how to choose, and some consideration about constraints on your choices. The Appendix to this booklet includes some information on university courses which may also be relevant in making your decision.

On the whole, four questions need thinking about when choosing a subject:

- 1 Do I like the subject?** One could go further than that: you probably love it - you are even passionate about it. Passion is what universities are looking for. This subject is something you may be studying for two years, and possibly even taking further. So much of Sixth Form work depends on self-motivation - background reading, for example - that you need to want to do it.
- 2 Am I good at the subject?** You have to qualify, with a B grade minimum at GCSE level. Full details about qualifying are found further on in this booklet. You need to be ambitious to succeed, and for that, you need to be realistic that you are doing something you are actually good at. It is important to ask your teachers for an honest opinion about your ability in a subject before taking it up at A Level.
- 3 Put together, do my choices form a balanced combination?** If you are selecting three science subjects, consider choosing an arts or humanity subject as your fourth option. It is also very important not to select four subjects that employ the same skills: four practical subjects will involve an insurmountable amount of work. Four essay subjects will do the same. The time involved in doing such combinations will become unbearable.

As a guideline, two subjects employing the same skills should be a maximum. Please also consider balancing 'new' subjects with old. As a guideline, no more than two subjects should be ones that are 'new'.

- 4 Have I thought about my future?** The vast majority of students do not know what they will be doing when they are 21. That is entirely normal, and does not matter. On the whole, career plans 'emerge'. What matters is that you do your best at each stage. In doing A Levels you will find the area you're really passionate about; at university or after, hopefully you will discover a vocation. Most universities just want good grades at A Level; most employers want a good degree, the subject matter of which is less important than the degree class. A student can delay their choice of career yet still have a wide range of opportunities.

But in some cases, students do need to think about the future now, because universities have very specific requirements. For example, it would not be possible to read Physics or Economics at most universities if you had not done Maths A Level. On the whole, university requirements tend to involve the sciences or technology. If you are thinking about being, for example, an architect, an engineer, a vet, a doctor, a midwife, or a physiotherapist, please check that your choices leave bridges open as opposed to closed. The Appendix to this pack provides some guidance, though you should also consult the Careers and Higher Education Library in the Miller Block.

Choosing A Levels at Wycombe High School

To Assist in your Decision Making (if you are a student at WHS)

- Our Careers and Higher Education Library is extensive and is situated on the ground floor of the Miller Block. It is open to all students and is usually empty of Sixth Formers at lunchtime, should you wish to do some research.
- You may wish to make an appointment to speak with our Pathways Adviser, Mrs Hayward, or with our attached Connexions Adviser.
- You have this 'Into the Sixth Form' Booklet and the subject flyers which you should read carefully.
- You will have an assembly and PSHE lessons on selecting options.
- During the 'Into the Sixth Form' Evening' - Wednesday 20 October - you will be able to talk with Subject Leaders, and with Sixth Formers doing the subject you are interested in.
- Students in WHS Year 11 will be provided with an opportunity to 'shadow' the Sixth Form for a day, and attend a lesson in each of the subjects that you think you might be interested in.
- Your Year 10 exam results and your Year 10 report will provide you with an indication of where your talents lie, and whether or not you will thrive in a subject at A Level.
- Your Year 11 Student Progress Check will provide a further indication of your ability in a subject.
- During the Year 11 Parents' Evening, you will be able to consult with your teaching staff directly about whether you are suited to A Level study in their subject.
- Once you have submitted your application form, you will be invited to have an informal chat about your choices with a senior member of staff.
- Your GCSE Mock exam results and Year 11 report in the Spring term should provide a further indication as to whether you have made the right AS selection.
- Finally, after your GCSE exams, we run an Access Day, when you attend a lesson in each of your AS subjects - a final opportunity, as it were, to confirm that you have made the right choice.

School operates a free choice without predetermined option blocks. Once all of your choices are entered on the system, the computer sets up the four teaching blocks. However, there are a few constraints:

- 1 Firstly, if very few people opt for a subject, it is financially not viable for us to run that subject. There is no predetermined cut-off number: we consider each course individually. Sometimes we agree to run a course but on a reduced number of teaching periods; sometimes we work with our neighbouring schools to put on a course. In other cases, especially if just three or four students wish to do that subject, we may have to ask you to make another choice. You will know this is the case in the spring term.
- 2 It may just not be possible to timetable the combination of subjects you have chosen. This does not affect subjects with big up-takes: they tend to run a class in each block. This situation tends to arise if a student chooses several minority subjects where there is just one class for each subject. If you chose Latin, Music, Modern History and German, for example, timetabling problems may ensue. We will let you know as early as we can should this be the case. In many cases there is often an acceptable compromise. In the past, for example, students have been asked to switch from Modern History to Early Modern History, or from Maths Mechanics to Maths Statistics.
- 3 In THREE cases, combinations of subjects are not permitted. Students may not do:
 - Both Business Studies and Economics*
 - Both Maths Mechanics and Maths Statistics*
 - Both Early Modern History and Modern History*
- 4 The fourth constraint is the fact that you do need to qualify for the courses you choose. Please check under our **Entry Requirements to WHS Sixth Form.**

Broadly speaking you need to qualify overall for the Sixth Form by obtaining 368 points at GCSE level, and then individually for four different subjects. If, on Results Day, you have not achieved a B grade for one of your Options (and an A grade in the case of Maths), we shall ask you to choose another subject. While this might sound harsh, experience does show that someone with a C or D grade at GCSE will not succeed at AS.

Frequently Asked Questions

Can I change my mind about my options

It is perfectly acceptable to change your mind after handing in your application form. However, please change your mind early! For preference, please tell us before the option blocks are 'fixed' by the computer. You will then be accommodated. Fixing the blocks happens in the late spring term. If you change your mind after that, there is no guarantee that you will be able to do your new choices.

You will be accommodated as long as your new choice fits the option blocks and fits the set sizes. If twenty students have already decided to do that subject, then the answer might be no. Students may not change options once courses have commenced, although we try to be flexible for the first fortnight of the autumn term.

Can I do more than four AS subjects? I want to do five.

The number of subjects - four - is not randomly chosen. Three factors go into this decision.

- Firstly, it is a reflection of timetable considerations: while you might want to do five subjects, we only set up four option blocks. You also have to fit in your Enrichment Programme, including PE and an Enrichment and Extension subject. There just is not the time to do more.

- Secondly, it reflects the reality of the workload of A Levels: while you might have a honeymoon period for the first month of Year 12 where the work seems light, by November most students are feeling the strain. Experience leads us to believe that four subjects at AS are just right.
- Thirdly, we are reflecting University requirements: even Oxford and Cambridge only ask for three A Levels - admittedly at AAA grade. However, universities are also asking for proof of work experience, leadership skills, extra-curricular commitments and all the other things you can do in the Sixth Form. And for that, you need time.

However, that said, it is possible to do five AS subjects, via our Enrichment and Extension programme. The options include AS Critical Thinking, A Level Further Maths, AS Geology, AS Film Studies and AS Photography. In Year 13 you will be given the opportunity to do the Extended Project Qualification which has the same status as an AS Level.

Can I do only three AS subjects?

Wycombe High School operates an academic Sixth Form, and as a norm we would expect all of our students to rise to the challenge of four AS subjects. However, we consider each student on an individual basis, and there are circumstances (ill health, for example) when a reduced timetable is in the best interests of the student.

Can I pick up a new subject in Year 13?

You can only commence study in a subject at A2 if you have achieved at least a D grade in that subject at AS. However, we do allow able students to do an additional AS subject in Year 13, on top of their three or four A2 courses, as long as the timetable permits it.

Constraints on your Choices

In one sense, we have very few: Wycombe High

Entry Requirements to WHS Sixth Form

Unless there are any extenuating circumstances, students who wish to study AS levels at WHS must:

- 1 **Gain a minimum of 368 points in their GCSEs**, two of which should be Maths and English Language at grades A* - C.

Full GCSE		Short GCSE	
A*	58	A*	29
A	52	A	26
B	46	B	23
C	40	C	20
D	34	D	17
E	28	E	14
F	22	F	11
G	16	G	8

- 2 **And meet Departmental entry requirements in four AS subjects.**

A student wishing to continue a GCSE subject to AS must have gained at least a B grade in that subject at GCSE. Maths is an exception: a student wishing to do Maths A Level must have gained at least an A grade in Maths GCSE. Business Studies students must attain a B in Business Studies, Maths and English.

We also offer seven new subjects at AS that we do not teach at GCSE level. In these cases the following entry requirements pertain:

- Computing B grades in Maths and ICT GCSEs
- Economics B grades in English Language and Maths GCSEs
- Government & Politics B grades in English Language and/or History GCSEs
- Physical Education B grade in PE and/or BB in GCSE Science and GCSE Additional Science
- Psychology B grade in English Language and B in Maths GCSEs
- Philosophy & Ethics of Religion B grades in Religious Studies and/or Citizenship GCSEs*
- Sociology B grade in English Language and/or a humanity GCSE

* Applications from external candidate whose schools do not offer these subjects as GCSEs will also be considered.

Seven departments permit a student to do their subject at AS where the student has not done that subject at GCSE, as long as other criteria are met:

- Business Studies B grades in Maths and English Language GCSEs
- Classical Civilisation B grade in English Literature GCSE
- Drama and Theatre Studies Active participation in school productions and amateur dramatics, and a B grade in English Literature
- D & T: Food Technology B grade in another Technology GCSE
- Geography B grades in Maths and BB in Science GCSEs
- History B grades in English Language and in English Lit GCSEs
- Music/Music Technology Grade 6 Practical and Grade 5 Theory and active participation in ensembles in school.

- Product Design: Graphics with Materials Technology B grades in Art and/or another Technology GCSE
- Product Design: Textiles B grades in Art and/or another Technology GCSE

Those opting for GCSE Italian or GCSE Spanish need to be good linguists, measured by the fact that they gained at least an A grade in one Modern Foreign Language or Latin at GCSE.

Please note:

- Group sizes must be viable. In the event that a subject or course does not attract sufficient applicants, either at AS or A2, it may not run.
- Students applying with BTEC qualifications must note that we will only calculate points based upon the equivalent of two GCSEs and this is only calculated for an overall point score. Admission is based on a student's average point score from their top eight GCSE results.
- Students who do not achieve a D grade at AS at the end of Year 12 will not be permitted to continue that subject to A2.

Year 13

Unless there are extenuating circumstances (like serious illness), a student wishing to progress on to Year 13 must have:

- D grades in at least two subjects at AS
- a 90% attendance rate in registrations and lessons
- a 90% punctuality rate in registrations and lessons

APPLICATION PROCEDURE

Internal Applicants

Please complete the application form enclosed in this pack and return it, via your tutor, to the Head of Sixth Form on Tuesday 14 December. Applications received after this date will be given every consideration but we cannot guarantee that we will be able to accommodate your AS choices. All internal applicants will be invited to have a short informal discussion about their choices with a senior member of staff.

External Applicants

We are delighted to receive applications from students who are not currently at Wycombe High School. At present we reserve a minimum of 30-35 places a year for such external applicants. Where eligible applications for courses exceed the number of places available, places will be offered to students obtaining the highest average points score from their top eight GCSE (full course) results. If there is more than one student with the same score, home-to-school distance will be the final determinator. External applicants are requested to complete the application form enclosed with this pack and return it to the Head of Sixth Form by Friday 28 January 2011. Please ensure that you have the correct postage on your envelope. Applications received after this date will be given every consideration but we cannot guarantee that we will be able to accommodate your AS choices.

We would also ask you to include with your application form:

- A letter outlining your reasons for wanting to study your chosen AS subjects and making it clear what it is about these subjects that interests you. You should also give details of how you have contributed to your school community whilst studying for GCSEs and outline what you feel you could contribute to the Sixth Form at Wycombe High School.
- A copy of your latest report or Record of Achievement **including your predicted GCSE grades.**

All external applicants will be invited to the school on Friday 18 March 2011 for the school's Open Morning.

Higher Education

Almost all members of Wycombe High School Sixth Form go on to university. We run a comprehensive programme of support to help you achieve your ambitions and potential. Sixth Form tutors are all experienced in mentoring students through the minefield of UCAS. We provide you with a copy of our own handbook, 'After A Levels', which contains guidance on choosing university courses, together with detailed advice on how to fill in application forms and prepare for interview. We also produce handbooks for students applying for Art Foundation courses, for Medicine, for Law, and an additional one for students interested in applying for Oxford or Cambridge.

We also have a comprehensive Higher Education and Careers Library in the Seminar Room in the Miller Block. You can make an appointment with our own Pathways Adviser, or with the visiting Connexions Advisor, and you are encouraged to attend University Open Days and 'taster courses'. There are opportunities to attend presentations from different professional bodies and occupations throughout the year. Each year we host a Careers and Higher Education Fair. We also arrange a Higher Education Evening in the Spring of Year 12 to which all students and parents are invited. This evening covers all the essential information about university applications, student finance, and two Admissions Tutors give presentations and answer individual questions. We invite Oxbridge applicants to go to the Cheltenham Conference and we organise interview practice for anyone facing an interview. We also invite past students in to talk about their university experiences.

Students who decide to apply to university after leaving will receive the same assistance as students currently studying in the Sixth Form. We believe in aftercare and welcoming back former Wycombe High students is always a real pleasure.

Incidentally, it is worth reiterating here that your GCSE grades are just as important as your AS and A Level grades. Excellent universities and highly competitive courses require excellent GCSEs. For example, seven A* grades at GCSE are required by Birmingham University for those who wish to read Medicine.



Appendix 1 - 2010 A Level Results

Subject	Entries	NUMBERS AT EACH GRADE										PERCENTAGE AT EACH GRADE										GRADE PERCENTAGES			AV UCAS POINTS
		A*	A	B	C	D	E	U	X/Q	A*	A	B	C	D	E	U	X/Q	A*-A	A*-B	A*-E					
Art	26	2	13	9	2	0	0	0	0	0	0	0	0	0	0	0	0	57.7	92.3	100.0	111.5				
Biology	65	7	18	26	11	3	0	0	0	0	0	0	0	0	0	0	0	38.5	78.5	100.0	104.6				
Business Studies	30	2	5	11	8	2	2	0	0	0	0	0	0	0	0	0	0	23.3	60.0	100.0	94.0				
Chemistry	44	6	11	11	8	7	1	0	0	0	0	0	0	0	0	0	0	38.6	63.6	100.0	99.1				
Classical Civilisation	11	1	6	4	0	0	0	0	0	0	0	0	0	0	0	0	0	63.6	100.0	100.0	114.5				
Critical Thinking	3	0	0	2	0	1	0	0	0	0	0	0	0	0	0	0	0	0.0	66.7	100.0	86.7				
D&T Food Technology	10	0	3	6	1	0	0	0	0	0	0	0	0	0	0	0	0	30.0	90.0	100.0	104.0				
D&T Product Design	4	0	3	1	0	0	0	0	0	0	0	0	0	0	0	0	0	75.0	100.0	100.0	115.0				
D&T Textiles	6	0	2	4	0	0	0	0	0	0	0	0	0	0	0	0	0	33.3	100.0	100.0	106.7				
Drama	7	0	3	1	2	1	0	0	0	0	0	0	0	0	0	0	0	42.9	57.1	100.0	97.1				
Economics	17	0	8	4	4	0	1	0	0	0	0	0	0	0	0	0	0	47.1	23.5	0.0	101.2				
English Literature	70	11	20	20	14	5	0	0	0	0	0	0	0	0	0	0	0	15.7	28.6	20.0	105.1				
Extended Project	15	11	2	2	0	0	0	0	0	0	0	0	0	0	0	0	0	73.3	13.3	0.0	126.7				
French	9	4	4	1	0	0	0	0	0	0	0	0	0	0	0	0	0	44.4	44.4	100.0	115.6				
Geography	36	9	13	12	1	1	0	0	0	0	0	0	0	0	0	0	0	25.0	36.1	33.3	115.6				
History	29	3	17	9	0	0	0	0	0	0	0	0	0	0	0	0	0	10.3	58.6	31.0	115.9				
Information Technology	9	0	1	4	2	2	0	0	0	0	0	0	0	0	0	0	0	0.0	11.1	44.4	88.9				
Japanese	1	0	1	0	0	0	0	0	0	0	0	0	0	0	0	0	0	0.0	100.0	0.0	120.0				
Latin	12	3	6	2	1	0	0	0	0	0	0	0	0	0	0	0	0	25.0	50.0	16.7	118.3				
Mathematics	60	12	27	12	5	4	0	0	0	0	0	0	0	0	0	0	0	20.0	45.0	20.0	112.7				
Mathematics Further	13	3	4	4	1	1	0	0	0	0	0	0	0	0	0	0	0	23.1	30.8	30.8	110.8				
Music	2	1	1	0	0	0	0	0	0	0	0	0	0	0	0	0	0	50.0	50.0	0.0	130.0				
Physics	12	2	5	3	1	1	0	0	0	0	0	0	0	0	0	0	0	16.7	41.7	25.0	110.0				
Politics	25	5	13	3	2	1	1	0	0	0	0	0	0	0	0	0	0	20.0	52.0	12.0	112.8				
Psychology	58	5	25	19	8	0	1	0	0	0	0	0	0	0	0	0	0	8.6	43.1	32.8	108.3				
Religious Studies	21	4	8	6	3	0	0	0	0	0	0	0	0	0	0	0	0	19.0	38.1	28.6	112.4				
Sociology	18	2	4	7	2	2	1	0	0	0	0	0	0	0	0	0	0	11.1	22.2	38.9	98.9				
Spanish	14	2	5	5	2	0	0	0	0	0	0	0	0	0	0	0	0	14.3	35.7	35.7	110.0				
Sport/PE Studies	6	0	3	1	1	1	0	0	0	0	0	0	0	0	0	0	0	0.0	50.0	16.7	100.0				
Turkish	1	0	0	0	1	0	0	0	0	0	0	0	0	0	0	0	0	0.0	0.0	0.0	80.0				
TOTALS	634	95	231	189	80	32	7	0	0	0	0	0	0	0	0	0	0	15.0	36.4	29.8	108.1				
		AVERAGE QCA POINTS SCORE										2006-2010 PERCENTAGES AT EACH GRADE										2006-2010 GRADE PERCENTAGES			
		Per Student										Per Entry													
2003		286.8										95.1													0
2004		298.2										99.6													0.0
2005		311.3										102.8													0.0
2006		311.2										103.9													0.0
2007		896.23										240.04													0.0
2007		(310)										(102.5)													
2007		incl AS 366.3										236.6										A*-A			A*-E
2008		914.04																							99.5
calculated manually		384.26																							99.8
2009		902.4										237.5													99.3
calculated manually		373.2																							99.8
2010		964.71										242.1													100.0

Appendix 2 - 2010 Leavers' Destinations

Destination	Course	Deferred Entry 2011 / Reapplying	Gap Year / Employment
Gap Year Reapplying		R	G
Pioneering			E
Gap Year - working Reapplying		R	G
Employment - Working and Special Constable Possibly joining Police Force			E
Employment - Westwood Associates (ICT Sales Support)			E
Gap Year - Travelling Imperial College, London - Deferred		D	G
Gap Year - working and travelling Reapplying		R	G
Gap Year Reapplying		R	G
Gap Year Reapplying		R	G
Gap Year - 3 months working at Chester Zoo, 3 weeks in Zambia working with lions Reapplying		R	G
Gap Year - re-sitting and travelling Reapplying		R	G
Gap Year - working Reapplying		R	G
Employment - with Chartered Accountant company			E
Gap Year - working and travelling Reapplying		R	G
Gap Year - working in a primary school Reapplying		R	G
Gap Year - working over summer and then working in Australia			G
Gap Year - resits Reapplying		R	G
Employment			E
Gap Year - Travelling and working Reapplying		R	G
Gap Year - working and travelling Reapplying		R	G
Gap Year - employment and travel Reapplying		R	G
Gap Year Reapplying		R	G

Destination	Course	Deferred Entry 2011 / Reapplying	Gap Year / Employment
Gap Year - working in a medical environment Reapplying		R	G
Employment - HSBC			E
Gap Year - travelling			G
Gap Year - working and travelling			G
Gap Year - working and travelling			G
Gap Year - working full time at sports centre Reapplying		R	G
Gap Year - working part time, possibly at a museum Reapplying		R	G
Gap Year Reapplying		R	G
Employment - Working in a children's nursery 3 months probation, hoping to become full time and will study NVQ2.			E
Gap Year - working part time Events Management in future			G / E
Gap Year - Travelling to Australia and New Zealand UEA - Deferred	Accounting and Finance	D	G
Oxford (New College)	Ancient and Modern History		
Southampton	Anthropology		
Durham	Anthropology and Archaeology		
Southampton	Applied Social Sciences		
Bath	Architecture		
Plymouth	Architecture		
Chelsea College of Art and Design	Art and Design Foundation		
Kensington and Chelsea College	Art and Design Foundation Diploma		
Bucks New University	Art Foundation		
Bucks New University	Art Foundation		
Oxford Brookes	Art Foundation		
Bucks New University	Art Foundation		
Surrey	Bio veterinary Science		
Nottingham	Biochemistry		
Gap Year - work and travelling including volunteer work with Tsunami orphans Oxford - Deferred	Biochemistry	D	G
Kent	Biodiversity Conservation and Management		
Leeds	Biology		
Durham	Biology (with a year in industry)		

Appendix 2 - 2010 Leavers' Destinations

Destination	Course	Deferred Entry 2011 / Reapplying	Gap Year / Employment
St Georges	Biomedical Science		
Gap Year	Biomedical Science	D	G
Manchester - Deferred			
Queen Mary's	Biomedical Science		
Brighton	Biomedical Sciences		
Westminster	Business Management		
Manchester Metropolitan	Business Studies		
Gap Year - working in Canada for 4 months	Business Studies	D	G
Portsmouth - Deferred			
Sheffield Hallam	Business Studies		
Aston	Chemistry		
Oxford (Magdalen)	Chemistry		
Southampton	Chemistry		
Keele	Children's Nursing		
Warwick	Classical Civilisation		
Swansea	Classical Civilisation and Egyptology		
University of Wales	Classics		
Exeter	Classics		
Reading	Consumer Behaviour and Marketing		
Birmingham	Criminal Investigations		
Gap Year - working	Criminology	D	G
Birmingham - Deferred			
Surrey	Dance and Culture		
Warwick	Discrete Maths (BSc)		
Exeter	Drama		
Royal Holloway	Drama and Theatre Studies		
Bath	Economics		
Birmingham	Economics		
Sheffield	Economics		
Leeds	English		
Southampton	English		
Swansea	English		
Nottingham	English and History		
Warwick	English and Italian Literature		
Aston	English Language		
York (St John)	English Language		
Exeter	English Literature		
Aberystwyth	English Literature		
York	English Literature		
Birmingham	English Literature		
Westminster	English Literature and Cultural Studies		

Destination	Course	Deferred Entry 2011 / Reapplying	Gap Year / Employment
Durham	English Literature and Education Studies		
Gap Year - Travelling	English Literature and International Relations	D	G
Kingston - Deferred			
Oxford (St Catherine's)	English Literature and Language		
Westminster	English Literature and Modern History		
Gap Year - working, travelling in Far East, volunteering in Cambodia, work experience in France	European Studies (with French)	D	G
Manchester - Deferred	Exercise and Sports Science		
Exeter	Exercise, Health and Nutrition		
Oxford Brookes	Fashion and Textiles Design		
Southampton	Fashion Promotion and		
Nottingham Trent	Communication Forensic Science (with a year in industry)		
Kent	French		
Bristol	Geography		
Birmingham	Geography		
Keele	Geography		
Southampton	Geography		
Birmingham	Geology and Physical		
Southampton	Geography Graphic Communication		
Leeds	Design Hispanic Studies		
Bristol	History and Politics		
Leeds	History of Art		
Warwick	Human Biology		
Gap Year - working until February, travelling Peru, Chile, Bolivia	International Politics/History	D	G
Birmingham - Deferred			
Aberystwyth	International Relations		
Leeds	International Relations and		
Gap Year - working and travelling	French Latin	D	G
Swansea - Deferred			
Gap Year - working and travelling	Law	D	G
Exeter - Deferred			
Bedfordshire	Management - Maths		
Leeds	Marketing		
Portsmouth	Marketing, Design and		
Nottingham Trent	Communication		

Appendix 2 - 2010 Leavers' Destinations

Destination	Course	Deferred Entry 2011 / Reapplying	Gap Year / Employment
St Andrews	Materials Science		
Warwick	Mathematics		
Southampton	Mathematics		
York	Mathematics		
Nottingham	Mathematics		
Keele	Mathematics and Business Management		
Salford	Maths		
Southampton	Maths and Management Studies		
Nottingham	Mechanical Engineering		
Royal Holloway	Media Arts		
Gap Year - work experience with Warner Brothers in LA and travelling Royal Holloway - Deferred	Media Arts	D	G
Royal Holloway	Media Arts		
Sussex	Media: Practice and Theory		
King's College, London	Medicine		
King's College, London	Medicine		
Oxford (Pembroke)	Medicine		
Durham	Molecular Biology and Biochemistry		
Bournemouth	Multimedia Journalism		
Cambridge	Music		
Cardiff	Music		
Nottingham	Natural Sciences		
Gap Year - studying and working in Germany for a year Newcastle - Deferred	Natural Sciences	D	G
Gap Year - working for 6 months, travelling and volunteer work Leeds - Deferred	Nutrition	D	G
Gap Year - volunteering at Marine Conservation Centre in Philippines in March	Nutrition		G
Reading	Nutrition and Food Science (BSc)		
Hertfordshire	Paramedical Science		
Bucks New University	Performing Arts (Film, TV, Stage)		
King's College, London	Pharmacology and Molecular Genetics		
Hertfordshire	Pharmacy		
Reading	Pharmacy		
Huddersfield	Pharmacy		

Destination	Course	Deferred Entry 2011 / Reapplying	Gap Year / Employment
East Anglia	Pharmacy		
Heythrop College, UOL	Philosophy and Theology		
Nottingham	Physics		
Cardiff	Physiotherapy		
Bradford	Physiotherapy		
Birmingham	Political Science		
Sheffield	Politics		
Liverpool	Politics		
Sheffield	Politics		
Nottingham	Politics		
East Anglia	Politics		
Birmingham	Politics and Economics		
Cardiff	Politics and Religious Studies		
Gap Year - working and travelling Leeds - Deferred	Politics and Sociology	D	G
Bath	Politics with International Relations		
Oxford	PPE		
Brighton	Primary Education		
Oxford Brookes	Primary Education		
Plymouth	Primary Education with Science		
Gap Year - church youth work and travelling Brighton - Deferred	Primary Teaching with QTS	D	G
Swansea	Psychology		
Nottingham	Psychology		
Birmingham Newman College	Psychology		
Nottingham	Psychology		
De Montfort	Psychology		
Goldsmiths	Psychology		
Cardiff	Psychology		
Birmingham	Psychology		
Manchester Metropolitan	Psychology		
Manchester	Psychology		
Birmingham	Psychology		
Cardiff	Psychology		
Birmingham	Psychology		
Gap Year - working, charity work, travel Birmingham - Deferred	Psychology	D	G
Loughborough	Psychology		
Birmingham	Psychology		
Leeds Metropolitan	Public Relations		

Appendix 2 - 2010 Leavers' Destinations

Destination	Course	Deferred Entry 2011 / Reapplying	Gap Year / Employment
London College of Fashion	Retail Branding and Visual Merchandising		
Brunel	Sociology		
Southampton	Sociology		
Bristol	Spanish		
Manchester	Spanish and Portuguese		
Birmingham	Speech and Language Therapy		
Brighton	Sports Studies		
Southampton	Sports Studies		
Bath	Sports Studies with Coaching		
Sheffield	Structural Engineering and Architecture		
Nottingham	Television and Film Studies		
Nottingham Trent	Textile Design		
Durham	Theology		
Bristol	Theology		
Durham	Theology and Social Anthropology		
Nottingham	Veterinary Medicine		
Bristol	Veterinary Science		
Gap Year - working in San Francisco for 6 months and travelling Leeds - Deferred	Zoology	D	G



APPENDIX 3 - CHOOSING A LEVEL SUBJECTS

A View To Higher Education And Careers

This table provides only a general guideline and is not intended to be exclusive. These are samples of some of the many kinds of courses which WHS students have taken after leaving school. **Please note** that in the information which follows, minimum qualifications only are given. In practice, high grade results, extra qualifications, work experience and particular personal qualities are often sought, especially by the professions.

NB: Students should seek professional advice from the school if they have any queries about their choice of course and course combinations. The best books on the subject are Degree Course Offers - 2011 entry and Choosing your Degree Course and University, both by Brian Heap.

University Course or Career	A Level (A2) Requirement(s)	Recommended/Useful other A Levels	Additional notes
Accountancy	A Level in Maths Statistics is preferred at some universities.	A Levels in Maths Statistics and Economics are particularly suitable.	It is very common to train as an Accountant after a degree in a non-related subject. A good grade at GCSE Maths is essential.
Agriculture / Forestry / Horticulture	Two science subjects for degree courses - but these can include Maths and Geography.	Two of Chemistry, Biology, Geography, Maths Stats should be considered.	Entry is possible at all levels, from no qualifications to a degree, for which two science A Levels are the usual minimum requirements. Work experience is important.
Archaeology	Chemistry may be required for a BSc course.	Chemistry, Latin, Classical Civilisation, History	Work experience is important.
Architecture	Maths and / or Physics are required for certain courses. If Art A Level is not taken an Art portfolio may be requested.	An ideal combination of A Levels is Physics, Mathematics, preferably Further Maths, Art and one other subject.	Design ability is essential, as is a proven interest, often reflected in a portfolio of work including drawings, sketching and photographs of buildings and places of architectural interest.
Art	No specific subjects required.	Art or Product Design: Graphics or Textiles, in order to generate the portfolio of work which is necessary for admission onto a Foundation Course in Art.	Art & Design Foundation Courses are usually required prior to entry on to a practical degree in Art.
Art History	History is required for some courses.	Art, History	You might consider GCSE Italian as your enrichment course.
Biochemistry	Chemistry and one other science.	Biology, Physics, Maths Statistics	
Biology	Chemistry and Biology.	Biology, Physics, Maths Statistics	Three science / maths subjects are recommended.
Business Studies / Business Administration/Business Management	Maths is required or preferred by some universities.	Business Studies or Economics, Maths Stats. A Modern Foreign Language is required for some international courses.	Consider Young Enterprise as your Enrichment Subject. Ensure that you have at least a B grade at Maths GCSE.
Chemistry	Chemistry and another science.	Biology, Physics, Maths Stats	

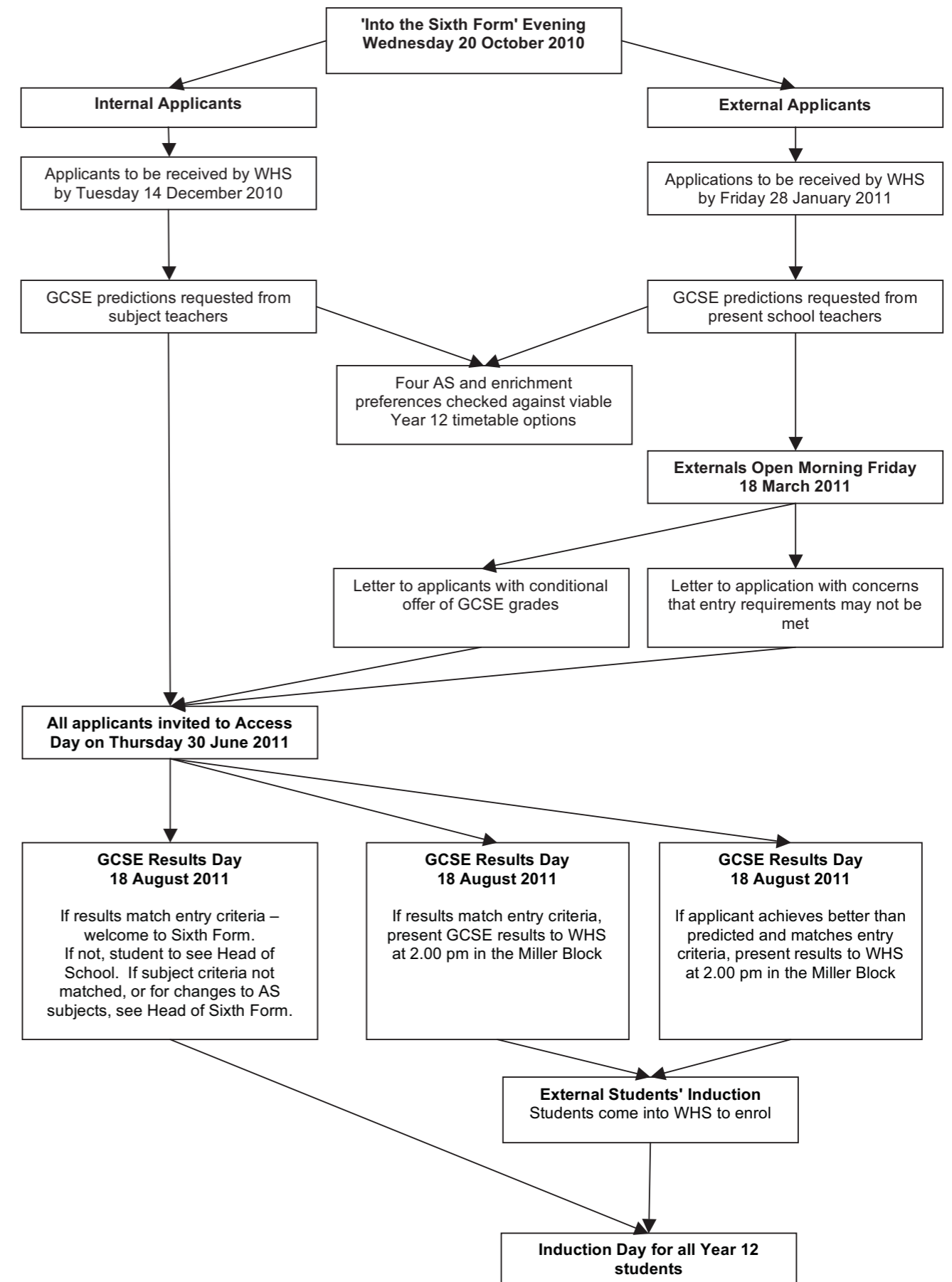
University Course or Career	A Level (A2) Requirement(s)	Recommended/Useful other A Levels	Additional notes
Classics / Classical Civilisation	Latin may be required for some courses, but most do not stipulate this.	Latin and / or Classical Civilisation are strongly recommended. History / English Literature / Modern Languages also work well.	Classics courses vary widely, and some require no knowledge of Latin or Greek. Greek can be learned 'from scratch' at University. However, you may wish to take Classical Greek GCSE in Year 13.
Computer Science	A Level Maths is essential for many courses.	IT and Physics are useful but not essential.	
Dentistry	Three Science A Levels normally sought. Chemistry is vital and two from Physics, Biology and Mathematics highly desirable.	Physics, Biology, Maths	A good Maths GCSE is desirable if the subject is not taken at A Level. Some degree of manual dexterity is looked for - which can be demonstrated by playing a violin, needlework, cake decorating ... Work experience is important.
Dietetics	Chemistry is required by most institutions. Biology is required by some.	Food Technology	
Drama	English Literature or Theatre Studies may be required or preferred.	History, a Modern Foreign Language are all suitable.	A rich portfolio of experience on the stage and at the theatre should be acquired.
Economics/ International Economics	Maths Stats is often a course requirement. Economics or Business Studies may be stipulated as preferred subjects.	Economics, Maths, Further Maths, Business Studies, History, Modern Language	Consider Young Enterprise as your Enrichment Subject.
Engineering	The majority of University engineering courses require Physics and Mathematics at A Level.	Possibly dependent upon choice of engineering. Economics and Geography are useful for Civil Engineering. A Level Design and Technology is increasingly useful.	Courses cover a very wide range including electronic, mechanical, civil, chemical and production engineering as well as the engineering technologies of robotics, artificial intelligence, etc. Many courses are supported by sponsorship schemes and industrial training with many opportunities for employment existing in the UK and abroad.
English Literature / English Language	English Literature	Any combination of Arts / Science subjects.	Admission tutors will expect students to have read widely outside the syllabus.
Environmental Studies / Science	Biology and Chemistry usually preferred; Geography is a requirement for some courses.	Maths Stats, Chemistry, Biology, Geography	
Food Science	Sciences, including Chemistry.	Biology, Physics, Maths	
French	French	Second Modern Language, English, Latin, History	
Geography	Geography. One or more sciences may be required for BSc courses.	Maths, Chemistry, Biology, Economics	You might consider Geology AS as your Enrichment subject.

University Course or Career	A Level (A2) Requirement(s)	Recommended/Useful other A Levels	Additional notes
Geology	Two or three subjects from Maths, Biology, Chemistry, Physics usually required.	Physics, Chemistry, Biology, Geography	You might consider Geology AS as your Enrichment subject.
German	German	Second Modern Language, English, Latin, History	
History	History	Modern Language, Latin, English, Economics, Classical Civilisation, Music	
Journalism	No specific subjects required.	A literary subject at A Level an advantage but not essential. You should choose subjects that you are good at, and consider Critical Thinking as your enrichment option.	Three A Levels usually needed for entry to a NCTJ Course at 18; students will be competing with graduates for these places. Journalists come from very varied academic backgrounds. Scientists, for example, may work as editors or reporters for specialist journals.
Land Management	No specific subjects required.	Maths, Economics, Geography	
Law	Any three 'academic' A Levels with high grades are usually required. Law A Level is not required and considered a disadvantage by some university departments.	Critical Thinking is very useful indeed. History, Politics, English Literature, a Modern Language, Latin: all are useful. Otherwise, do what you are good at.	It is possible to do a Law Conversion Course after a degree in most subjects, although this requires an extra year of study. Some universities now require an additional test (LNAT) to be taken for entry to Law. The LNAT is very similar to Critical Thinking.
Management Studies	No specific subjects required.	Mathematics Statistics A Level is most useful, so too are Languages.	Consider Young Enterprise as your Enrichment Subject
Materials Science / Metallurgy	Maths, Physics and / or Chemistry A Levels required on most courses.	Biology, Geography	
Mathematics	Mathematics Further Mathematics	Physics	
Medicine	Chemistry and one of Biology / Maths / Physics. In practice, it is best to take two of these.	Each institution varies: read Brian Heap carefully. Some universities like a Modern Language or a Humanity as the fourth AS to show breadth. If only two sciences are studied at A2 Level, the third subject must be a rigorous 'academic' one.	Competition is fierce, and a prerequisite for studying medicine is excellent GCSEs - you should aim to achieve at least 6 A*'s. Universities require an additional test (BMAT or UKCAT) to be taken for entry to the course. Critical Thinking is very useful indeed since it is very similar to the BMAT and UKCAT. Work experience is essential.
Midwifery	At least one science A Level although Chemistry and Biology are preferred for the degree course.	Any, though Sociology and Psychology would go well.	Work experience is essential but hard to do at your age. Consider Maplewood, Horizons, and a job in a care home for the elderly.

University Course or Career	A Level (A2) Requirement(s)	Recommended/Useful other A Levels	Additional notes
Modern Languages	A Modern Foreign Language to demonstrate linguistic ability, even if you do not intend to study this language at university.	A second Modern Foreign Language, English Literature, History, Latin.	A great range of languages is on offer at many Universities: for example, Arabic, Danish, Russian or Swedish can all be learned 'from scratch'. However, it is important to demonstrate linguistic skills. Consider Critical Thinking or GCSE Italian or Spanish as your Enrichment Subject
Music	Music plus specified instrumental grade.	Any - but musicians in the past have seemed to do History, Maths, Latin, Classics, English.	Active participation in ensembles in and out of school
Nursing (Degree)	At least one science A Level although Chemistry and Biology are preferred.	Sociology, Psychology	Work experience is essential but hard to do at your age. Consider Maplewood, Horizons, and a job in a care home for the elderly.
Occupational Therapy	A Level Sciences are increasingly sought.	Biology, Chemistry	
Optometry	Two or more sciences.	Maths may be considered an acceptable alternative to sciences - you must check.	Work experience will be important.
Oriental Studies	No specific subjects required.	Languages, ancient or modern are desirable. History is useful.	Languages such as Chinese, Japanese, Arabic and Turkish may be studied 'from scratch'.
Pharmacy	Chemistry and two of Physics, Biology and Maths.	Physics, Biology, Maths	Mathematics is essential at GCSE if it is not taken at A Level, for entry to the degree course. Work experience will be important.
Philosophy	No specific subjects required.	RS, English, Maths, Modern Language, Latin, History, Classics	
Physics	Physics, Maths	Further Mathematics	
Physiotherapy	A minimum of one science A Level - usually Biology.	One or more further Science A Levels, Physical Education	Competition is fierce often from mature students and graduates, since relatively few universities offer this course. Good grades are important.
Politics	No specific subjects required, though some courses specify a preference for History or English A Level.	Government and Politics, History, Economics, English, Modern Language, Maths	Join the Debating Club and the Dessert Society.
Psychology	At least one Science (Chemistry, Biology) and / or Mathematics, especially if it is a BSc course.	Maths Statistics, Physics, Psychology	Psychology A Level is not essential and it is possible to study Psychology at University from scratch. University courses often have a strongly scientific core.
Sociology	No specific subjects required.	Sociology, Economics, Maths, Geography, Psychology, Politics, History	

University Course or Career	A Level (A2) Requirement(s)	Recommended/Useful other A Levels	Additional notes
Sports Science	One but preferably two science A Levels.	Useful A Levels might be Biology, Chemistry, Physical Education, Maths Stats	Very competitive and high A Level offers are made by several universities. You might consider CSLA as your enrichment.
Sports Management	No specific subjects required.	Useful A Levels might be Physical Education, Business Studies, Biology, Economics, Maths Stats, Sociology.	Entry at all levels. Management schemes seek academic A Levels. Sport & PE A Level is not essential. However, active involvement in the school sports is recommended. You might consider either Young Enterprise or CSLA as your enrichment.
Teaching - Primary or Secondary Education	A Levels in chosen major subject(s).	Any - but for Primary and Secondary Teaching students do need to demonstrate an academic competence in the subject in which they propose to specialise, and should remember that mainstream National Curriculum subjects are essential. That is, one cannot teach Sociology, for example, in a Primary School.	Mathematics, Science and English Language GCSEs at grade C or above are needed, plus a minimum of any two subjects at A Level. Teaching can either be entered via an undergraduate BEd course or a postgraduate PGCE. The latter is more common for secondary teaching. A portfolio of work experience with children is important. You should consider volunteer work in a primary school or Horizons.
Theatre Studies	No specific subjects required.	Theatre Studies, English Literature, Classical Civilisation, Art, Product Design: Graphics, Music, Maths, Physics.	A distinction could be drawn between Arts Administration, Acting and the Technical side such as Stage Management, Lighting and Sound Design. For the first two, any A Levels can be considered. Theatre Studies would be very useful. For the technical example given, Maths or Physics might be sought; students may wish to consider Music.
Theology	Religious Studies is required for some courses. Chemistry is essential. Requirements then vary from course to course but usually include Biology, and Maths or Physics.	RS, Early Modern History, Latin, Classical Civilisation, a Modern Language, Sociology	You might consider Critical Thinking as your enrichment, and attend Islamic and Christian Union meetings to widen your experience.
Veterinary Science		Physics, Maths, Biology, Critical Thinking	Highly competitive - excellent GCSE and A Level grades are required, as is a solid portfolio of work experience. Universities require the BMAT/UKCAT test, for which Critical Thinking is good preparation.
Zoology	Biology and Chemistry	Any subject	

Appendix 4 - Dates and Procedures





Wycombe High School
Marlow Road High Wycombe Bucks HP11 1TB
Headteacher: Mrs S N Cromie
Tel: 01494 523961 Fax: 01494 510354
Email: office@whs.bucks.sch.uk Web: www.whs.bucks.sch.uk

Fortiter, Fideliter, Feliciter



Maths &
Computing

